

Using smart TVs

Do you have a smart TV? Let's find out if you do, and what you can do with it to go beyond watching regular TV broadcasts.

What is a smart TV?

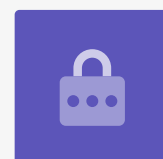
TVs are getting smarter all the time. Let's see what's special about smart TVs:

- A smart TV includes a small computer with Wi-Fi for connecting to the internet. It has several apps loaded, like a smartphone, for playing all sorts of content from the internet.
- You can control smart TVs with fancy remote controls, and many can also be controlled using your voice.
- The most popular apps on smart TVs include **ABC iView**, **Netflix**, **YouTube** and **Amazon Prime Video**. These are usually pre-installed on a new smart TV. Other apps can be installed from the TV's app store.
- While it's usually most convenient to connect a smart TV to Wi-Fi, most smart TVs also include a wired network socket.
- Smart TVs show special controls on their screen when you press the **Home** button. These might be a ribbon of options across the bottom or other icons or small panels from which you can choose programs or services.
- If your TV does not connect to the internet, it is not a smart TV. If it is a smart TV and not connected to the internet, you're not enjoying the benefits it has to offer. Try connecting it to make it smarter!



Many smart TV can be controlled using your voice

For security, it's important to get apps only from an official app store. Smart TVs can only connect to the official app store for that TV, so you know the apps you download are safe.

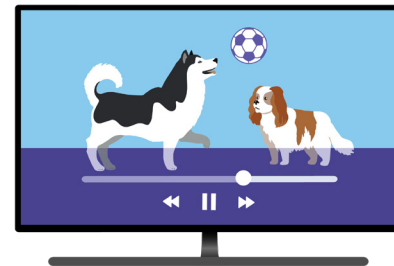


Using smart TV

How to make a TV smart

You don't have to buy a new TV if your current TV isn't smart, or if your smart TV is out of date. If your TV has HDMI plugs, you can just add a streamer to make it smart.

- The main feature of a smart TV is that it can **stream** content from the internet.
- **Streaming** is different to downloading. Instead of downloading an entire program to a device before playing it, streaming means that it can start playing within seconds with most modern internet connections.
- **Streaming** with a smart TV is safer than with a computer because TVs and streamers will only connect to a short list of safe sources.
- Streamers that you can add to any TV with a HDMI plug include **Chromecast with Google TV, Apple TV, Telstra TV, Amazon Fire TV, Roku Ultra** and **Fetch Mighty**, along with several others. (Note that streamers like Apple TV or Amazon Fire TV do not include the television screen. They are for connecting to your existing TV.)

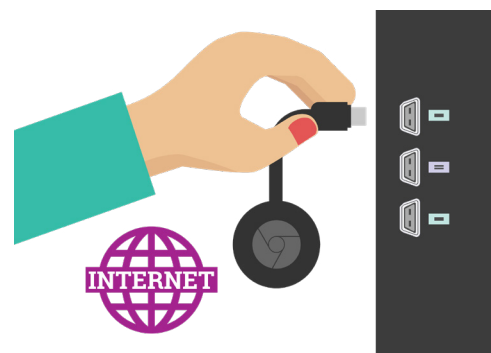


Smart TV stream video and audio from the internet

Using a streamer

Let's see how you use streamer, using the **Chromecast with Google TV** as an example. (Note: this is not the same as the Google Chromecast device.)

- Plug the **Chromecast with Google TV** into a HDMI socket on the TV and into power, then switch the TV to the HDMI input into which the Chromecast is plugged.
- When the **Chromecast with Google TV** has finished starting up, it will show you a setup page. The onscreen instructions will guide you through the setup process.
- You will need a smartphone or tablet and a **Google Account**. If you're using an iPhone or iPad, you should install the **Google Home** and **Google Assistant** apps on it first and sign into your Google Account.



The Chromecast with Google TV streamer adds smart features to any TV

Using smart TV

- When setup is complete, the **Chromecast with Google TV** will show its **Home** screen.
- This displays some of the things you can watch, with a row of apps across the bottom. You can press the **Google Assistant** button on the remote and ask things like, “**Show me movies with Australian actors.**”
- You will need accounts to use some of the apps, such as **Netflix** and **Prime Video**.



Google Assistant

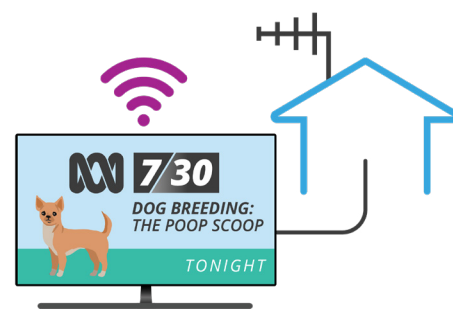
Show me movies with Australian actors.

Voice assistant technology helps you find Smart TV content

Things you can watch on a smart TV

So, let's see what you can actually watch using a smart TV:

- Your smart TV is still a normal TV, able to show you **free-to-air TV** broadcasts.
- Most free-to-air TV stations also offer catch-up TV services, from apps such as **ABC iView** and **SBS OnDemand**. These are free to watch, but you may need to create an account with the service provider first.
- You can also watch movies and TV shows from DVD or Blu-ray using a compatible player.
- Different smart TVs may offer some other free streaming services. But all of them offer **YouTube**, which is also free.
- Movies on-demand are available on a **pay-per-view** basis from services such as Google, Amazon and Apple. You will need to create a free account, and then pay to rent or buy the movie.
- Smart TVs generally include a range of subscription streaming services such as **Netflix**, **Amazon Prime Video**, **Stan**, **YouTube Premium** and **Disney+**. To use any of these you will have to sign up and pay between about \$10 and \$20 per month.
- Most TVs also include some music streaming services such as **Spotify**, **Apple Music**, **Amazon Music** and **YouTube Music**.
- Many smart TV apps are also available for mobile devices, so you can sign in with your account to watch on a smartphone or tablet.



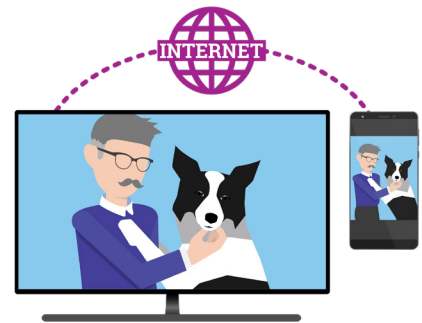
A smart TV provides broadcast TV and entertainment from the internet

Using smart TV

Your content on a smart TV

Finally, you can even watch your own media on a smart TV:

- These days we can capture photos and videos of our friends, family and travels using our phones. Rather than watching them on your phone's small screen, you can wirelessly send them to the big screen of your smart TV.
- We're using the **Google Photos app** on an **Android smartphone** or **iPhone** and **Chromecast with Google TV** device in this example. There are many different combinations depending on the model of TV or streamer, but you should get an idea on how it works from this example.
- The idea is that the Google Photos app on a smartphone can **cast** a photo or video to the Chromecast with Google TV streamer. This will then show on your TV.
- Switch on the TV and switch to the Chromecast's input. Open the Google Photos app on your smartphone and select a photo or a video. Then tap the **Google Cast icon** near the top right of the photo or video. If you don't see it, tap the photo or video on your phone's screen as it's displaying.
- This will bring up a list of compatible devices to which you can cast the content. Select your TV and after a few moments, the photo or video will appear on your TV screen.
- The smartphone then works like a remote control. Just swipe across to see the next photo or video.
- When you're finished, tap the Cast icon again and tap **Stop Casting** or **Disconnect** and your TV will return to its home screen, or perhaps whatever it was showing before.



A smart TV lets you share content from your phone to the big screen